

27" 1000 NITS HIGH BRIGHTNESS

INDUSTRIAL-GRADE TOUCH MONITOR



1000 Nits



1920×1080



10-Point Touch



Auto Dimming



HDMI / VGA



IP65 Front Panel



MODEL NO.:

TK 2700/T

With touch

TK 2700/C

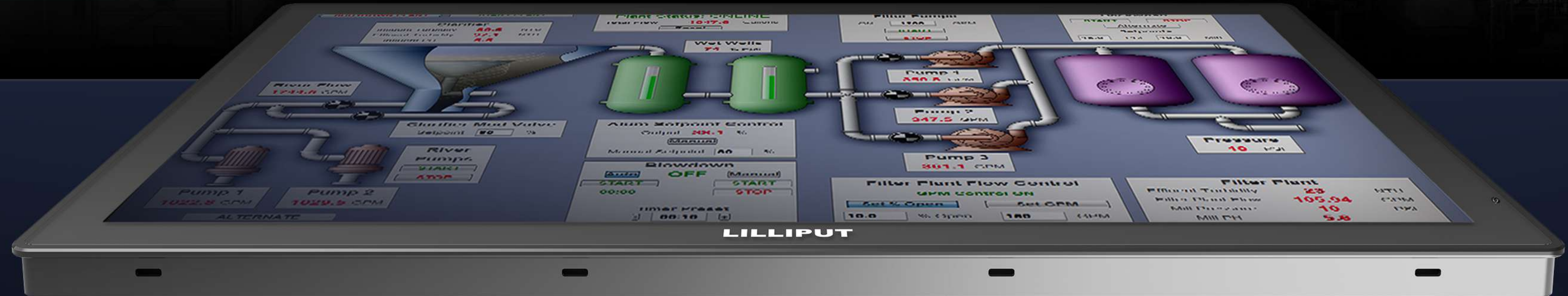
Without touch



7H HARDNESS

The hardness of screen panel is
greater than 7H and has passed
IK07 test.

1000 NITS



Touch monitor features with 1000 nits high brightness for outdoor sunlight readable.



27" FHD

27" Industrial-grade touch screen panel with 1920×1080 resolution.



1000 NITS

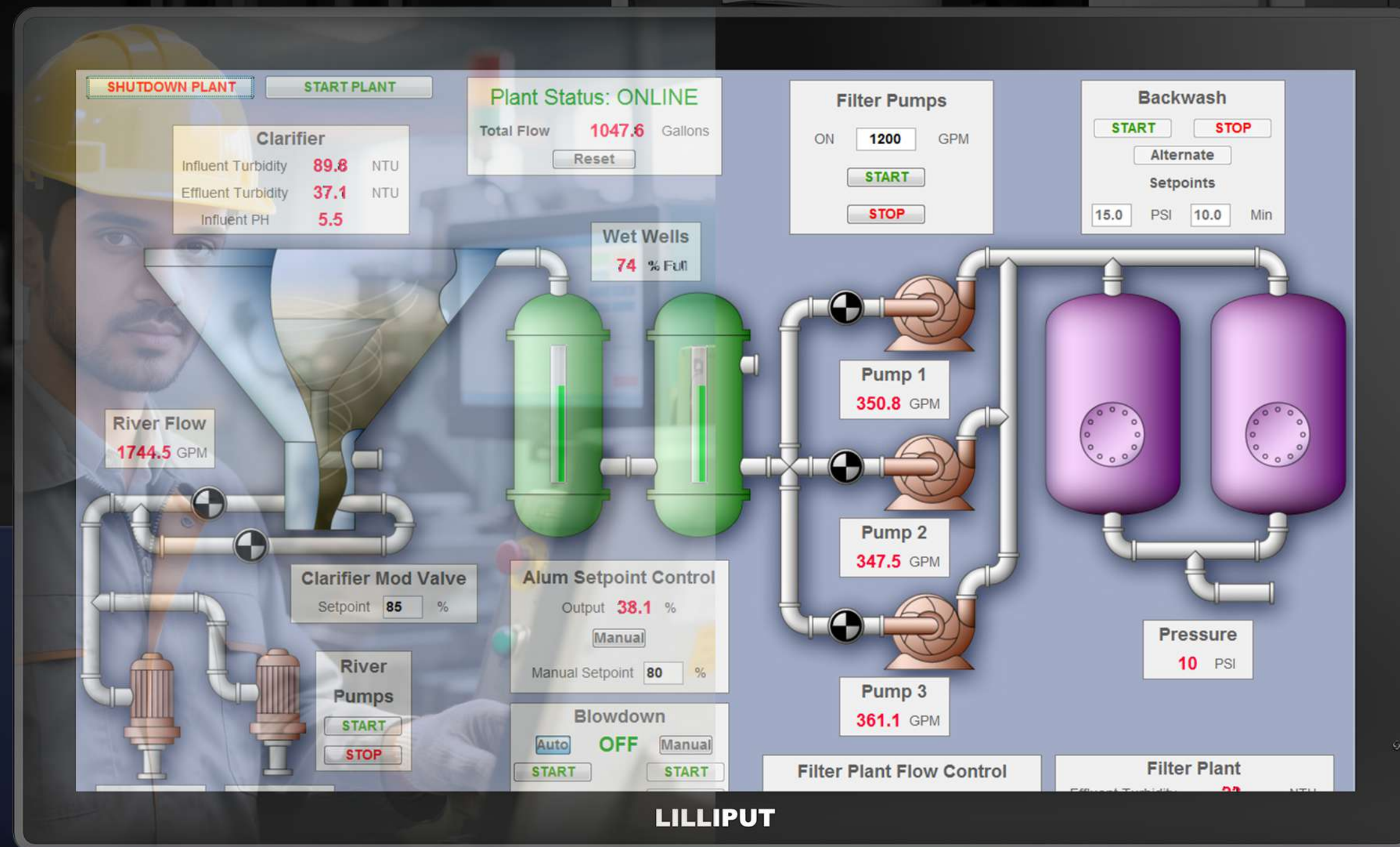
The screen can still be seen clearly in outdoor use without hindering operation.



AUTO DIMMING

Depending on the intensity of ambient light, the brightness of screen will be automatically adjusted to save power.

No Anti-glare



Anti-glare

ANTI-GLARE

SCREEN WITH UV-RESISTANT, AG AND AF COATING

The screen features a UV-resistant design for enhanced outdoor durability. Anti-fingerprint and anti-glare glass can reduce reflective glare in the environment.

7H AND IK07

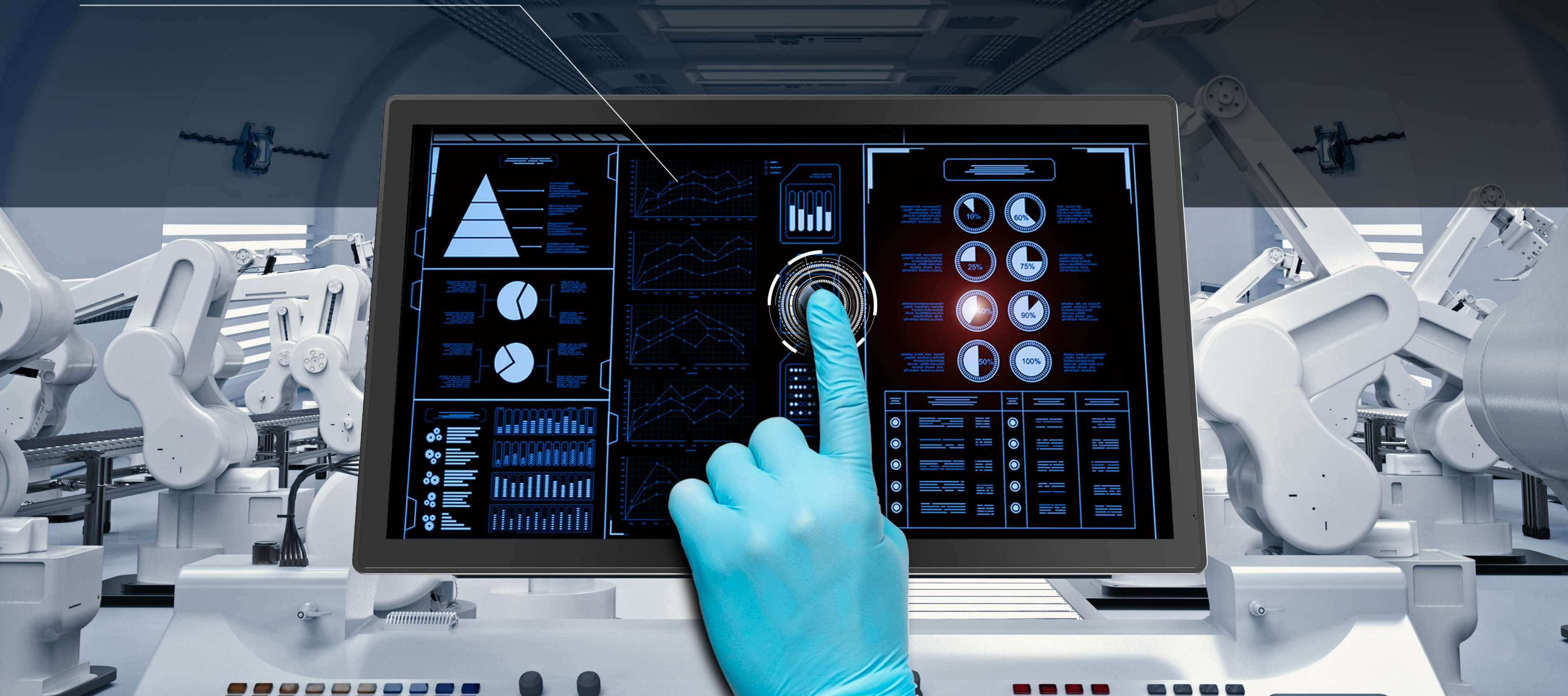
HARDNESS / COLLISION

The hardness of the screen is greater than 7H and it has passed IK07 test.

HIGH SENSITIVITY

GLOVE TOUCH

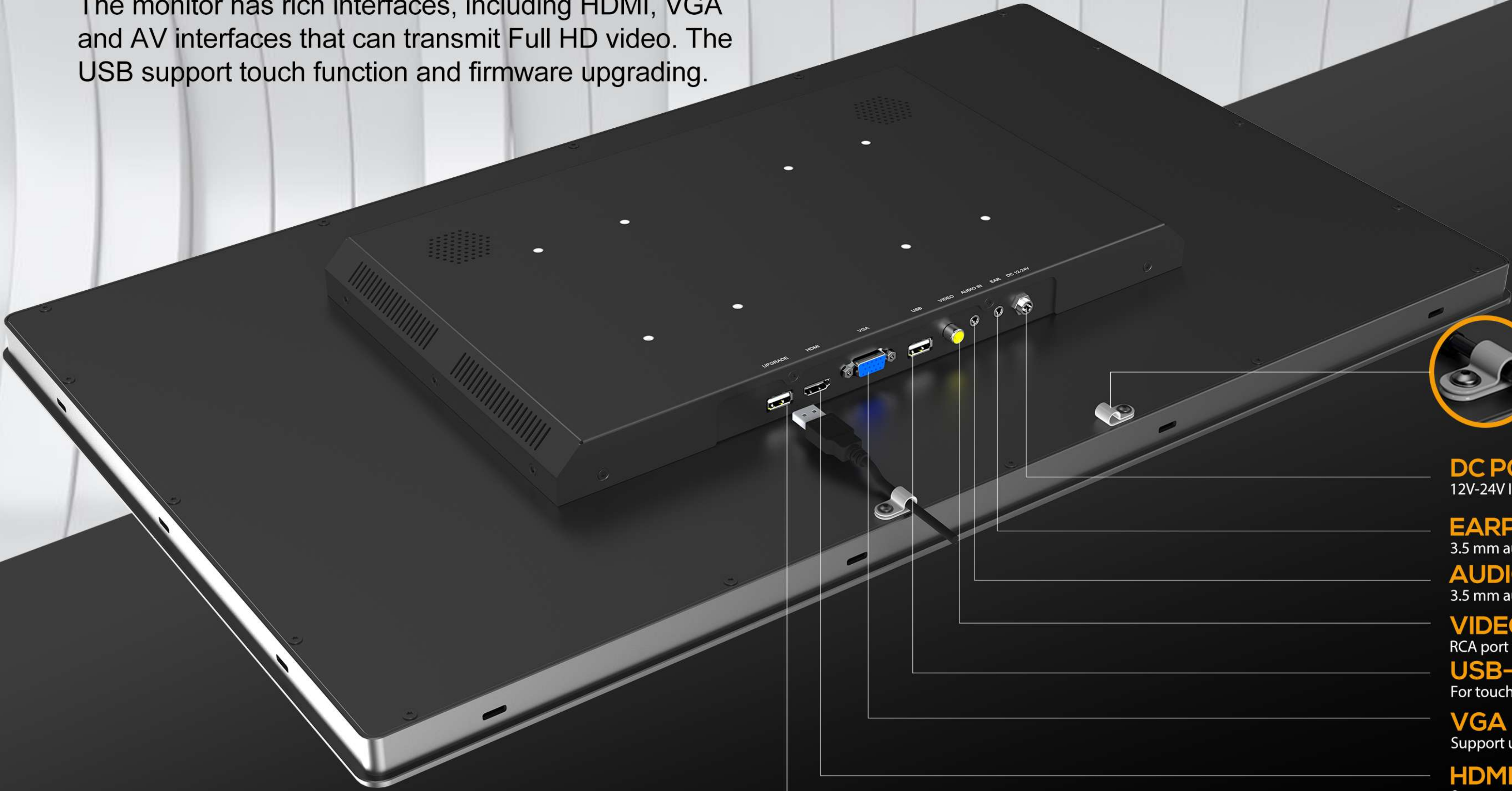
Operate with wet hands or a wide range of gloves, such as rubber gloves, latex gloves and PVC gloves.



HDMI / VGA / AV

RICH INTERFACES

The monitor has rich interfaces, including HDMI, VGA and AV interfaces that can transmit Full HD video. The USB support touch function and firmware upgrading.



ANTI-DROP
Anti-drop design for cables

DC POWER IN
12V-24V Input

EARPHONE JACK
3.5 mm audio output

AUDIO IN
3.5 mm audio input

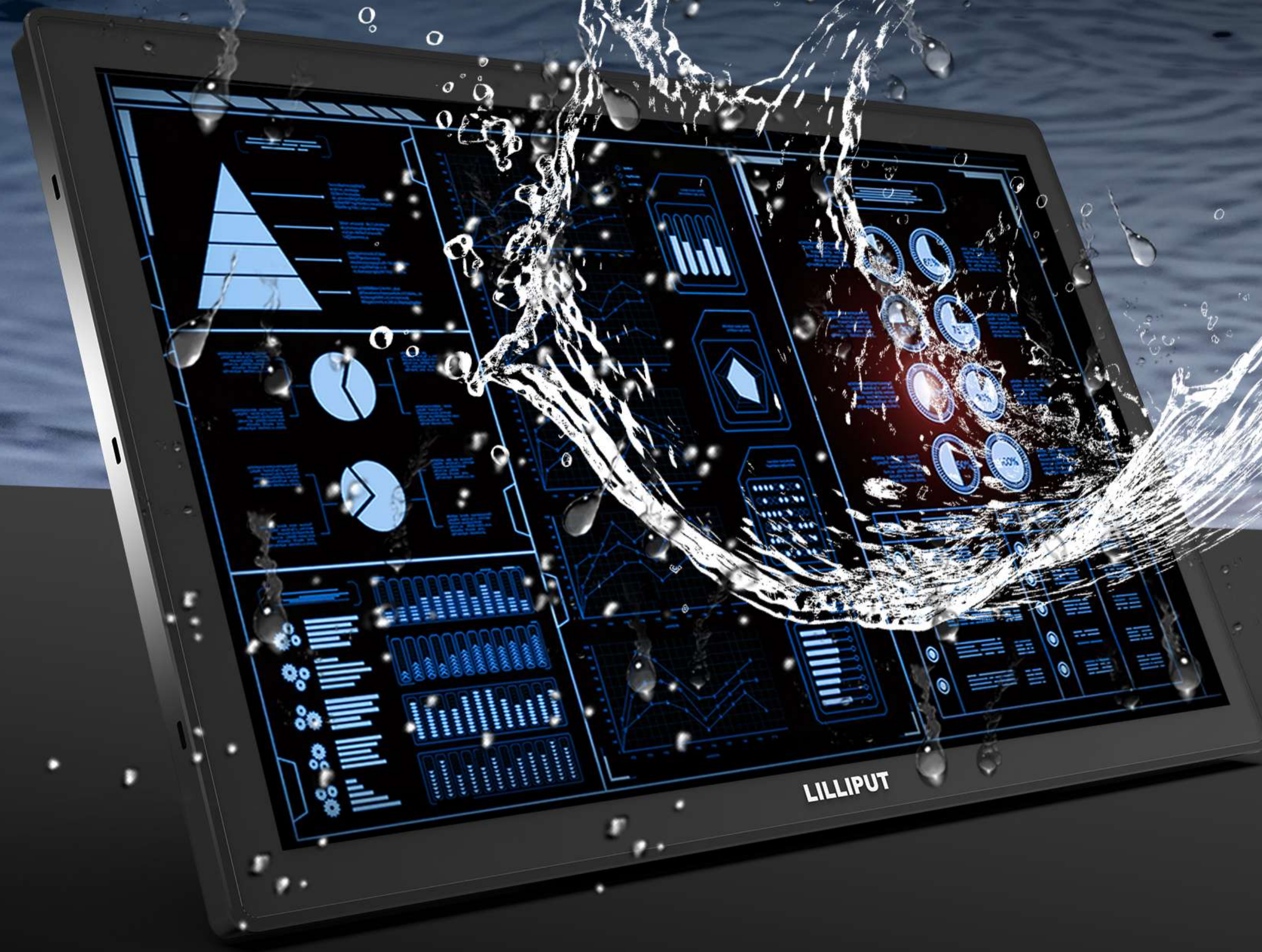
VIDEO IN
RCA port for video input

USB-A
For touch function

VGA IN
Support up to 1080p 60Hz

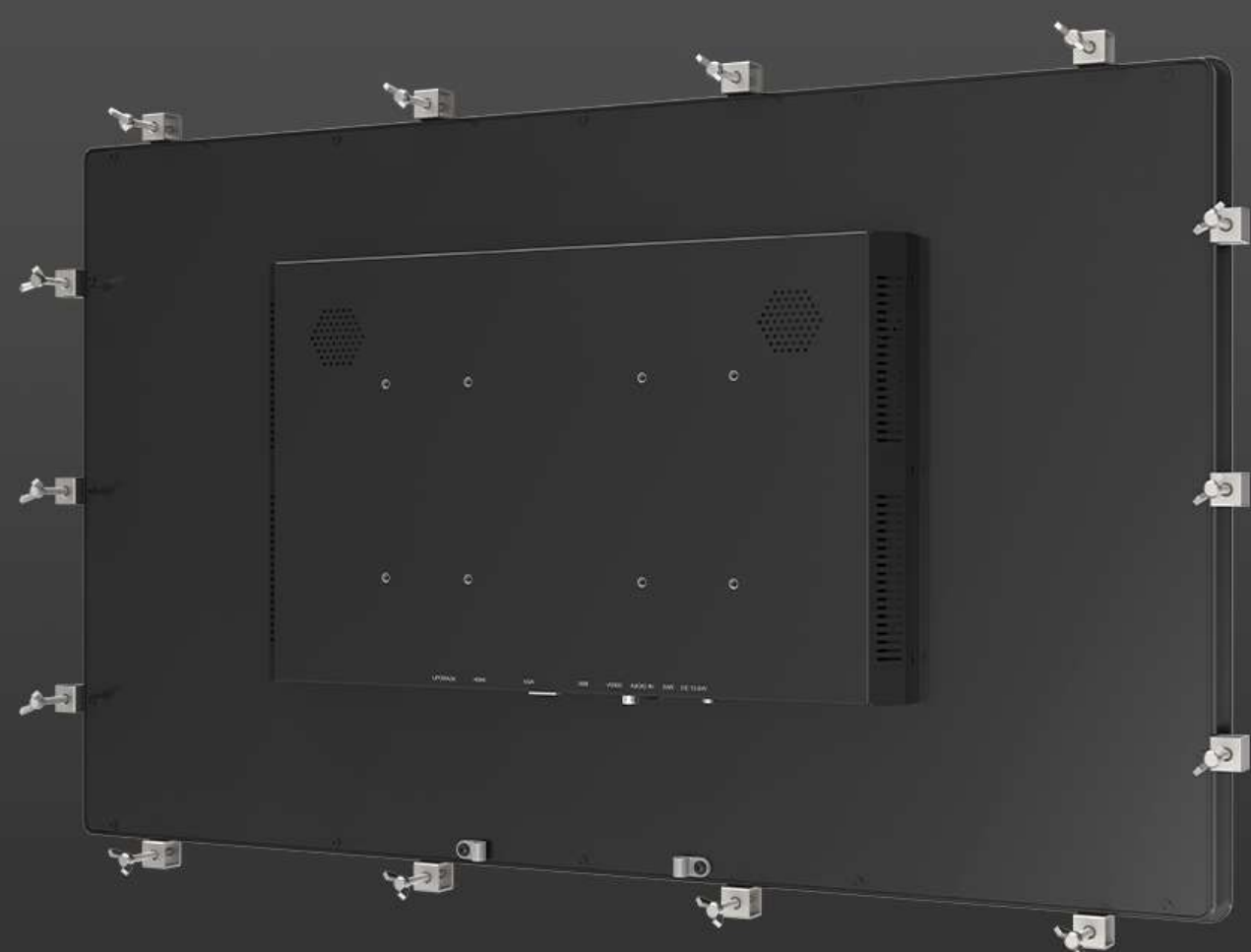
HDMI IN
Support up to 4K 30Hz

UPGRADE
firmware upgrade



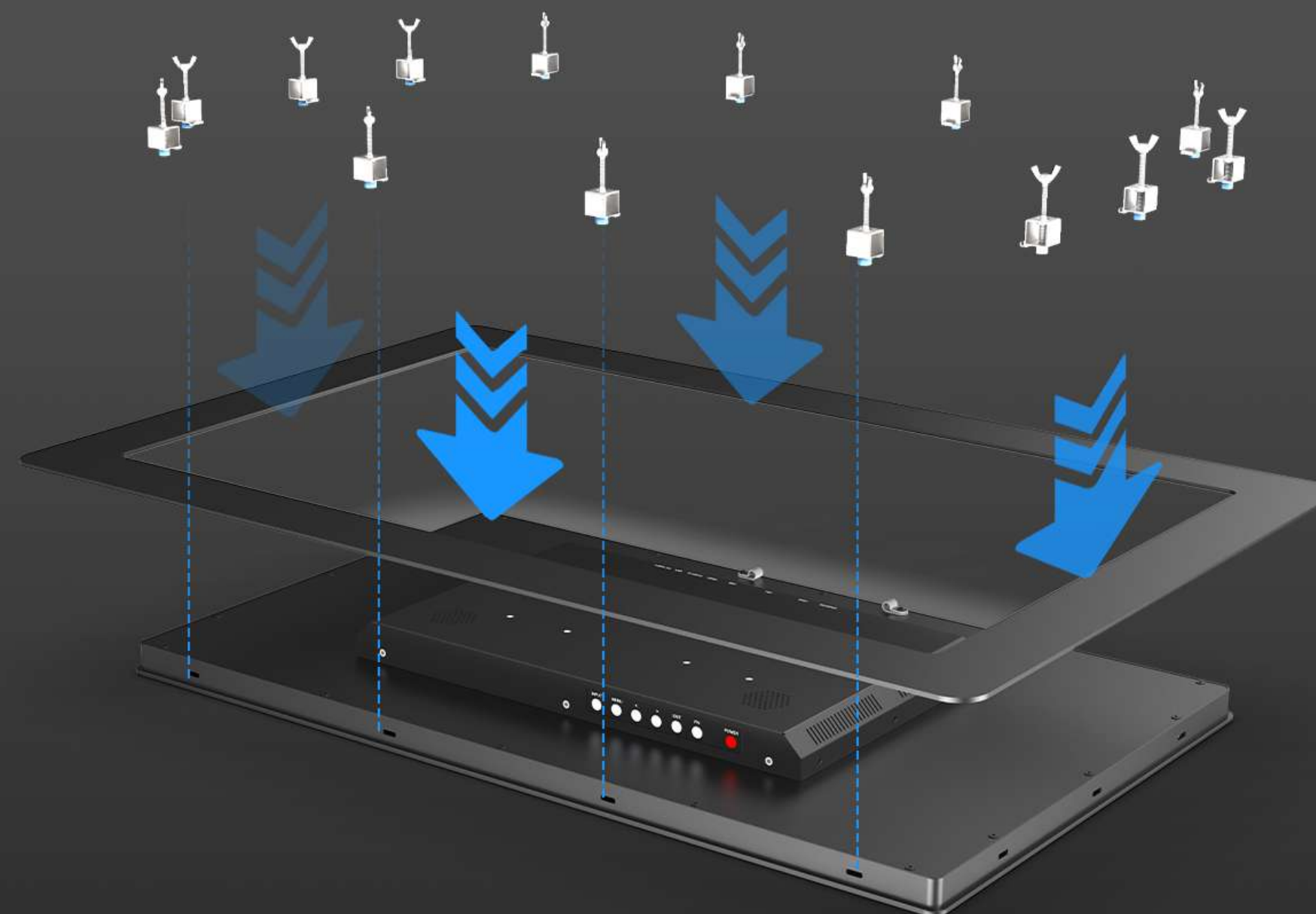
IP65 / NEMA 4 FOR FRONT PANEL

Front panel of the monitor is designed to carry IP65 rating and NEMA 4 degree of protection which offer complete protection against particles, and a good level of protection against water projected by nozzle against monitor from any direction.



VESA 100/200MM

Adapts to VESA bracket 100mm and 200mm mounting options.



EMBEDDED MOUNTING

The monitor can be embedded in a panel by using the special fixing screw kits.



INDUSTRIAL CONTROL



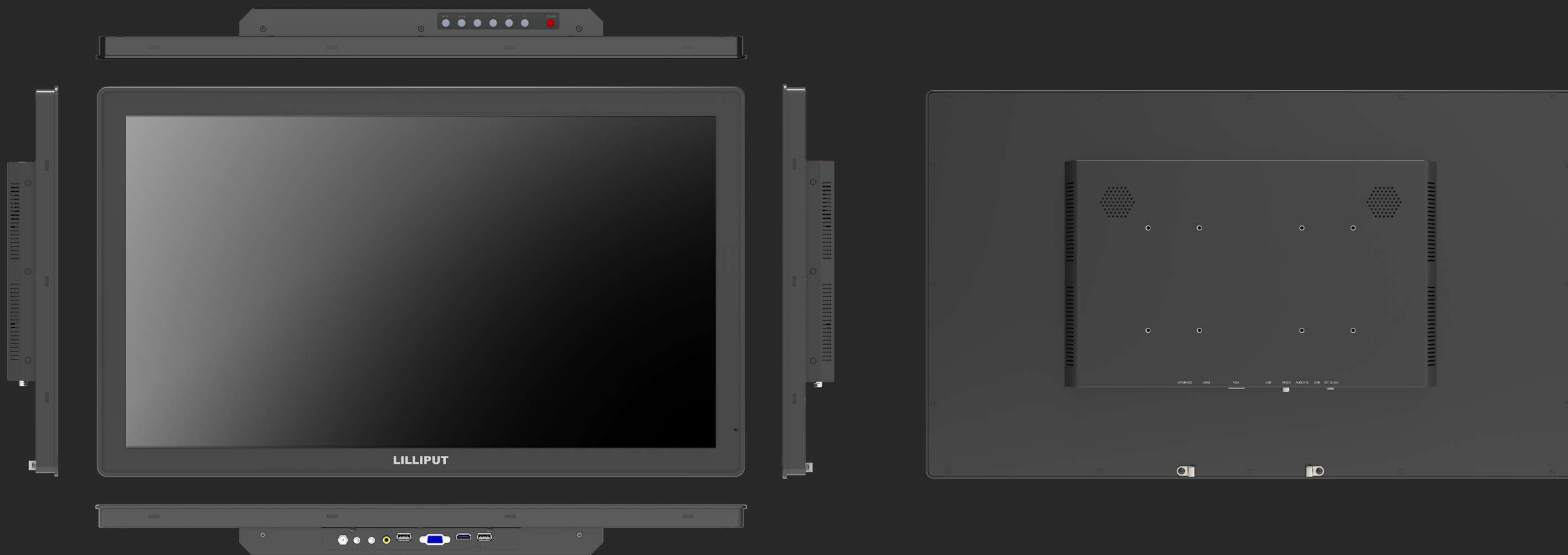
DASHBOARD INTERFACE



SMART LOCKER

SPECIFICATIONS

DISPLAY	Touch Screen	Capacitive touch
	Panel	27" LCD
	Physical Resolution	1920×1080
	Aspect Ratio	16:9
	Brightness	1000 nits
	Contrast	1000:1
	Viewing Angle	178°/ 178°(H/V)
	Coating	UV-resistant, anti-glare, anti-fingerprint
	Hardnes / Collision	Hardness ≥ 7H (ASTM D3363), Collision ≥ IK07 (IEC6262 / EN6262)
INPUT	HDMI	1
	VGA	1
	Audio & Video	1
	USB-A	2, for touch and upgrade
SUPPORTED FORMATS	HDMI	2160p 24/25/30, 1080p 24/25/30/50/60, 1080i 50/60, 720p 50/60...
	VGA	1080p 24/25/30/50/60, 1080pSF 24/25/30, 1080i 50/60, 720p 50/60...
	Audio & Video	1080p 24/25/30/50/60, 1080pSF 24/25/30, 1080i 50/60, 720p 50/60...
AUDIO IN/OUT	Speaker	2
	HDMI	2ch
	Ear Jack	3.5mm
POWER	Input Voltage	DC 12-24V
	Power Consumption	≤41W (12V)
ENVIRONMENT	IP Rating	Front panel IP65 (IEC60529), Front NEMA 4
	Vibration	1.5Grms, 5~500Hz, 1 hr/axis (IEC6068-2-64)
	Shock	10G, half-sine wave, last 11 ms (IEC6068-2-27)
	Operating Temperature	-10°C~50°C
	Storage Temperature	-20°C~60°C
DIMENSION	Dimension(LWD)	658.4mm × 396.6mm × 51.8mm
	Weight	9.5kg



ACCESSORIES

STANDARD



12V 5A Power Adapter



HDMI A-A Cable



VGA Cable



USB-A - C Cable (For Touch)



Video & Audio Cables



Screw Kits



Cable Clamps

OPTIONAL



Remote Control

