

LILLIPUT®

# 7" LED Field Monitor

with Advanced Functions

Specific Monitor by LILLIPUT with Broadcast Quality for DSLR & Full HD Camcorder  
Application for Taking Photos & Making Movies. Strongly recommend for DSLR fans & directors!

Model NO.: **663** **663/P2** **663/S2**  
(663/O) (663/O/P2)

- 178° wide viewing angles
- High brightness: 400cd/m<sup>2</sup>
- High contrast: 800:1
- Wide voltage: DC 7-24V
- Waveform / Vector scope
- Color / RGB histogram
- Audio level meter
- POP-UP shortcut menu

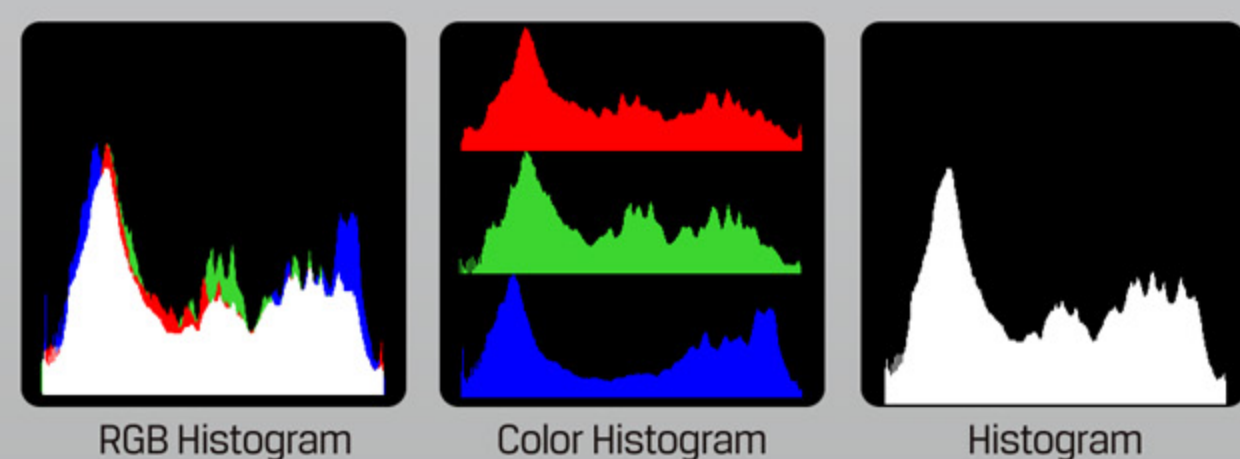
**1280×800** **Metal Housing**



## Small unit, Big wisdom

Lilliput creatively integrated waveform, vector scope & video analyser into on-camera monitor, which provides **Luminance/Color/RGB histograms, Y/Luminance, Cb, Cr, R, G & B Waveforms, Vector scope** and other waveform modes; And measurement modes such as Peaking, Exposure & Audio level meter. These assist users to accurately monitor when shooting, making and playing movies/videos.

\*Advanced functions are only available for model No.: 663/P2, 663/O/P2 & 663/S2.

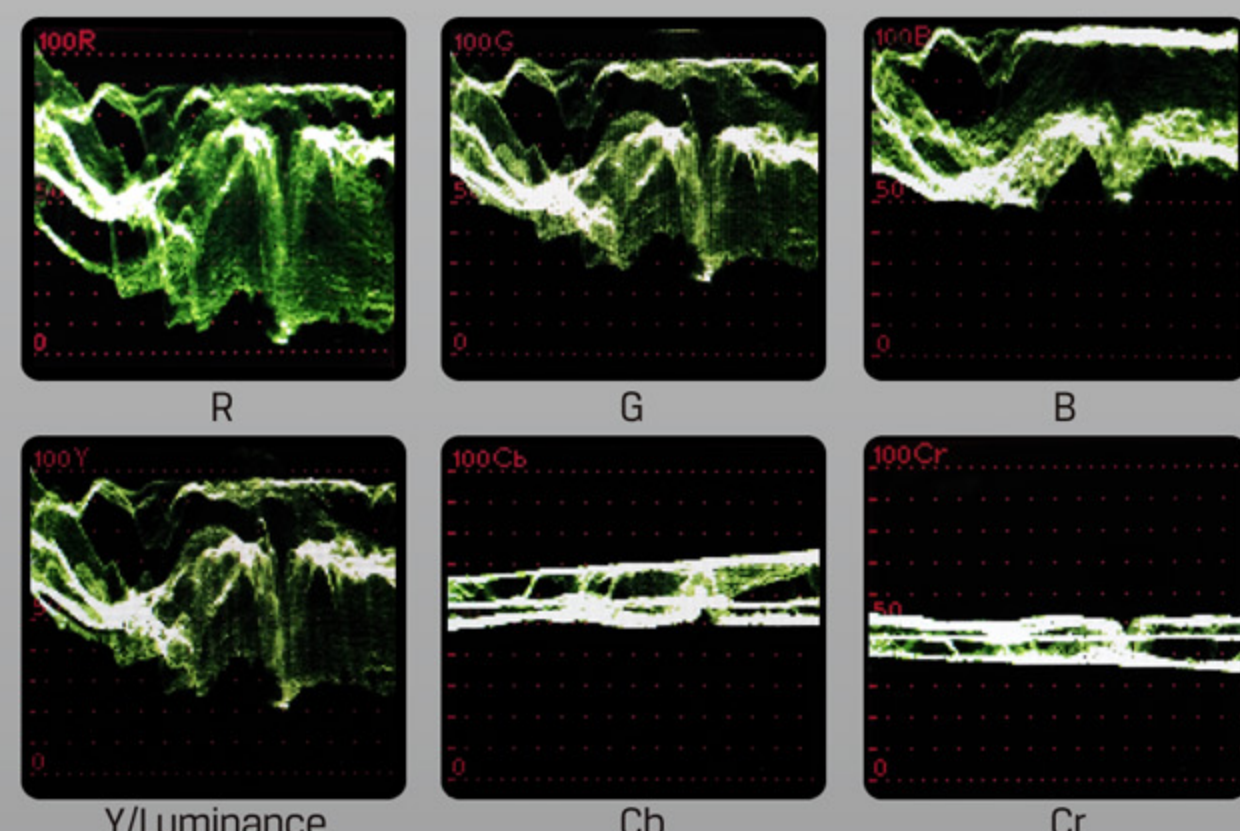


### Histogram

Histogram consist of RGB, Color & Luminance histograms.

- RGB histogram: shows the red, green, and blue channels in overlay histogram.
- Color histogram: shows histograms for each of the red, green, and blue channels.
- Luminance histogram: shows the distribution of brightness in an image as a graph of luminance.

The 3 modes can be selected to meet users' best needs and view visually the exposure of whole and each RGB channels. Users have the full contrast range of video for easy color correction during post production.



### Waveform

Waveform monitoring consist of R, G, B, Y/Luminance, Cb and Cr waveforms, which used for measuring the brightness, luminance or chroma values from a video input signal. It not only can warn the user for out-of-range conditions such as overexposure errors, but also assist with colour correction & camera white and black balance.

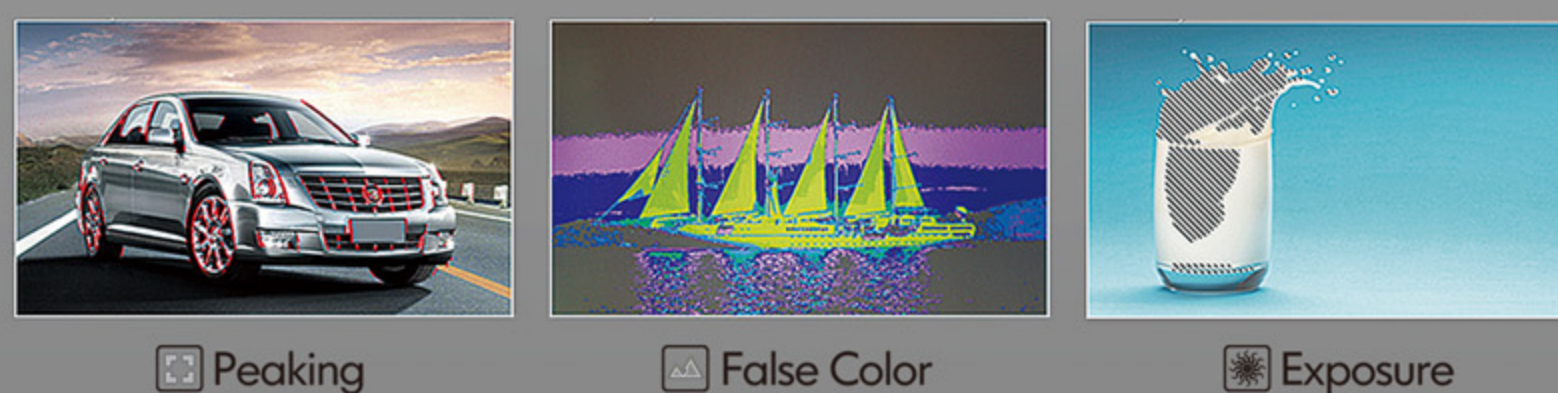


### Vector scope

Vector scope shows how saturated the image is and where the pixels in the image land on the color spectrum. It can also be displayed in various sizes & positions, that allows users to monitor color gamut range in real time.

### Audio Level Meter

The Audio Level Meters provide numerical indicators and headroom levels. It can generate accurate audio level displays to prevent errors during monitoring.



- > Camera Mode
- > Color Bar
- > Underscan
- > PIP
- > Check Field
- > Center Marker
- > Aspect Ratio
- > H/V Delay
- > Pixel-to-Pixel
- ...
- > Screen Marker
- > 8x Zoom
- > Image Flip
- > Freeze Input

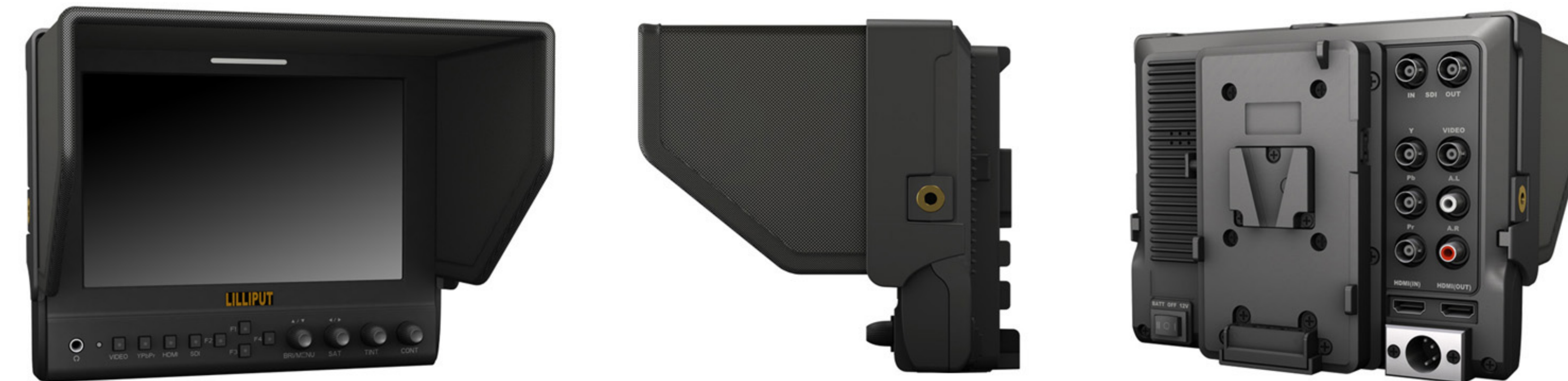
www.lilliput.com



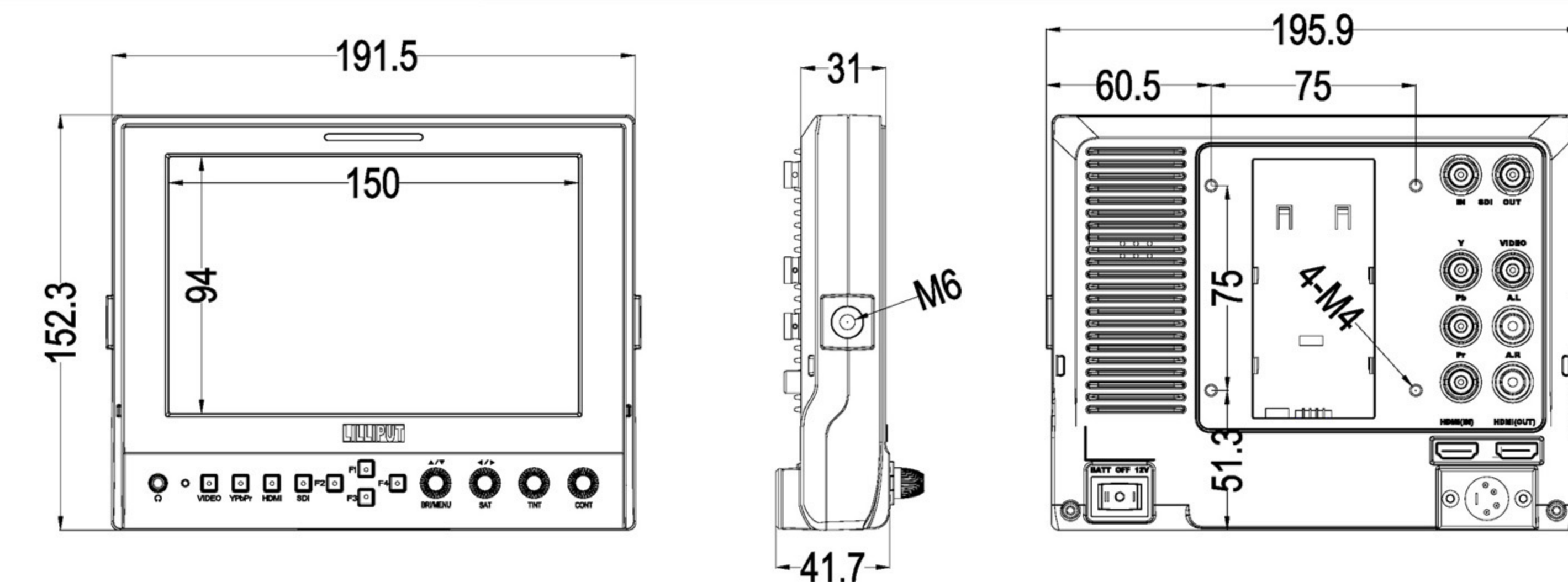
**ZHANGZHOU LILLIPUT ELECTRONIC TECHNOLOGY CO., LTD.**  
Add : Zong Si Road, Lan Tian Economic Development Zone, Zhang Zhou,  
Fu Jian, 363005, China  
Tel: +86-596-2109661/2109323  
Fax: +86-596-2109611 Email: sales@lilliput.com

Note: due to constant effort to improve products and product features, specifications may change without notice.

## APPEARANCE



## OUTLINE DIMENSION



## SPECIFICATIONS / ACCESSORIES

DISPLAY	Panel	7" LED backlit	1. Folding sun shade cover	1 piece
	Physical Resolution	1280×800	2. Gimbal bracket	1 piece
	Aspect Ratio	16:9	3. Battery plate (F-970, QM91D, DU21 or LP-E6)	2 pieces
	Brightness	400cd/ m <sup>2</sup>	4. HDMI A/C cable	1 piece
	Contrast	800:1	5. 12V DC adapter	1 piece
INPUT	Viewing Angle	178°/ 178°(H/V) (IPS)	6. Power and TALLY cable	1 piece
	3G-SDI	1(optional)	7. Suitcase	1 piece
	HDMI	1	8. Shoe mount	1 copy
	YPbPr	3(BNC)	9. Battery plate bracket	1 piece
	Composite	1	10. V-mount / Anton Bauer mount (optional)	1 piece
OUTPUT	AUDIO L&R	1	1. Folding sun shade cover	1 piece
	TALLY	1	2. Gimbal bracket	1 piece
	3G-SDI	1(optional)	3. Battery plate (F-970, QM91D, DU21 or LP-E6)	2 pieces
	HDMI	1	4. HDMI A/C cable	1 piece
	Speaker	1(built-in)	5. 12V DC adapter	1 piece
AUDIO	Ear Phone Slot	1(built-in)	6. Power and TALLY cable	1 piece
	Current	900mA	7. Suitcase	1 piece
	Input Voltage	DC 7-24V (XLR Connector)	8. Shoe mount	1 copy
	Battery Plate	V-mount / Anton Bauer mount / F-970 / QM91D / DU21 / LP-E6	9. Battery plate bracket	1 piece
	Power Consumption	≤12W	10. V-mount / Anton Bauer mount (optional)	1 piece
ENVIRONMENT	Operating Temperature	-20℃~60℃	1. Folding sun shade cover	1 piece
	Storage Temperature	-30℃~70℃	2. Gimbal bracket	1 piece
DIMENSION	Dimension(LWD)	191.5×152×31 / 141mm (with cover)	3. Battery plate (F-970, QM91D, DU21 or LP-E6)	2 pieces
	Suitcase Dimension(LWD)	309×247×97.5mm	4. HDMI A/C cable	1 piece
DIMENSION	Weight	760g / 938g (with cover) / 2160g (with suitcase)	5. 12V DC adapter	1 piece
			6. Power and TALLY cable	1 piece