



MODEL NO.:
BM310 - 4KS
31.5" 4K Broadcast Director
 Monitors

3G-SDI 4K HDMI	3840x2160
CNC Aluminium Quad-Split Viewing	

4K

Broadcast monitor for 4K/Full HD camcorder & DSLR
 Application for taking photos & making movies

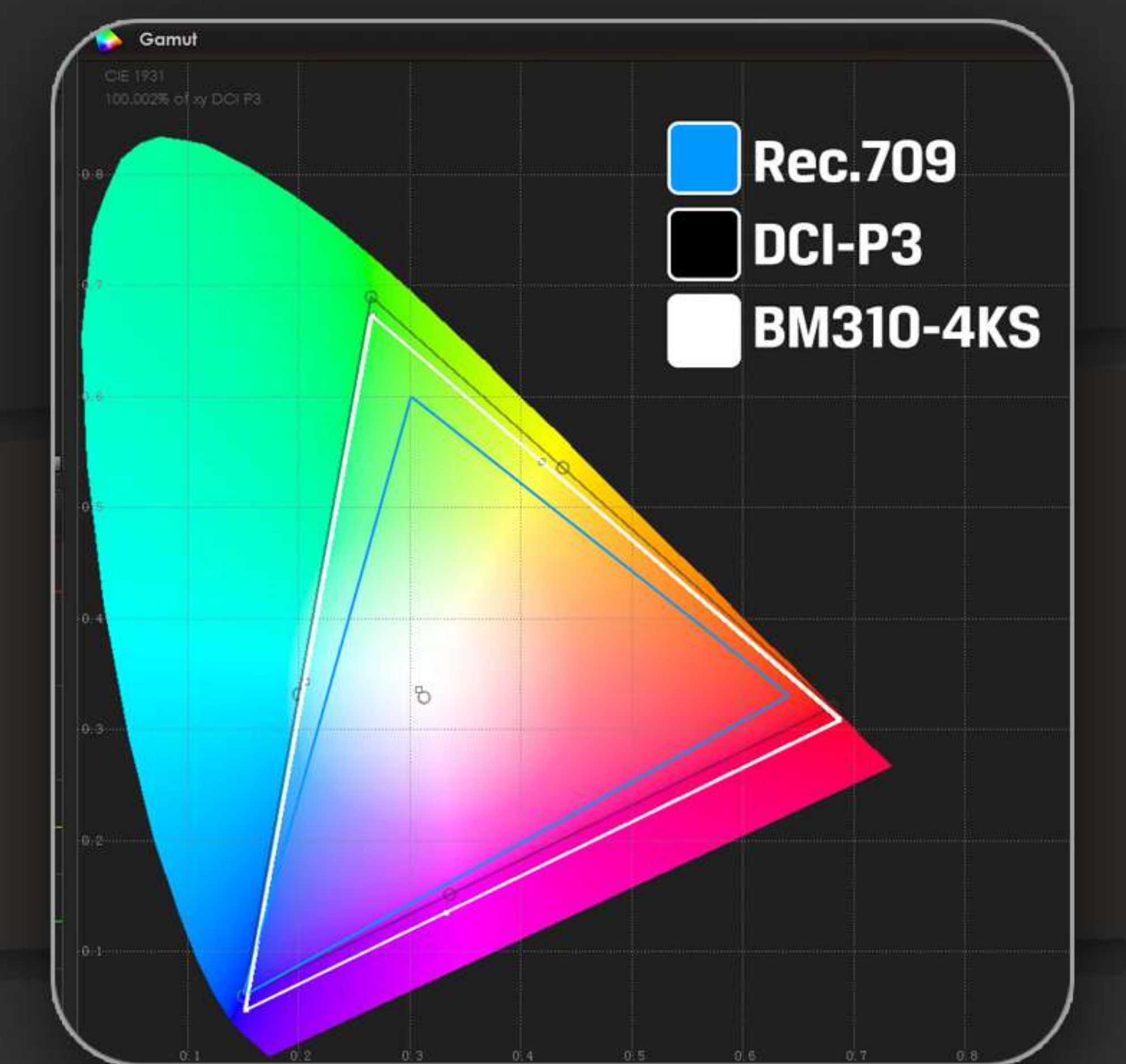
A Better Camera Mate

Matches with world-famous 4K/FHD camera brands, to assist cameraman in better photography experience.



97% DCI-P3 Color Space

Native, Rec.709, DCI-P3 and 3 User Defined are Optional for Color Space



Accurate Color Calibration

A specific calibration to reproduce the colors of the image color space. Color calibration supports the PRO/LTE version of ColourSpace CMS by Light Illusion.



HDR

When HDR is activated, the display reproduces a greater dynamic range of luminosity, allowing lighter and darker details to be displayed more clearly. Effectively enhancing the overall picture quality.



Without HDR
Inaccurate exposure, reduced image detail, unsatisfactory viewing experience.



With HDR
Enjoy sharper images, greater detail and richer colors. Auto / HDR10 are for optional.

3D LUT

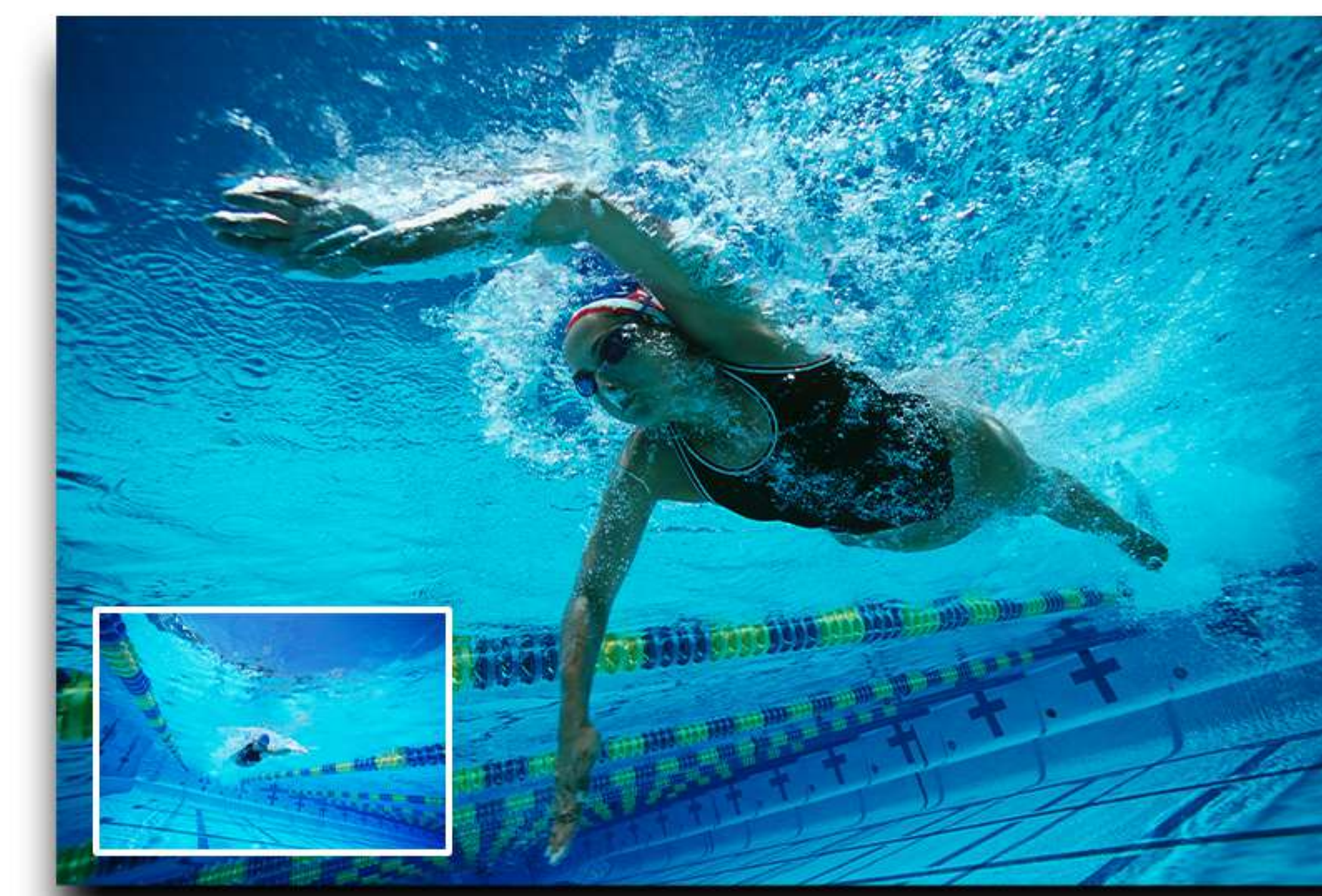
Wider color gamut range to make precise color reproduction of Rec. 709 color space with built-in 3D LUT, featuring 3 user logs.



3D LUT LOAD

Supports loading the .cube file via USB flash disk.

QUAD-SPLIT



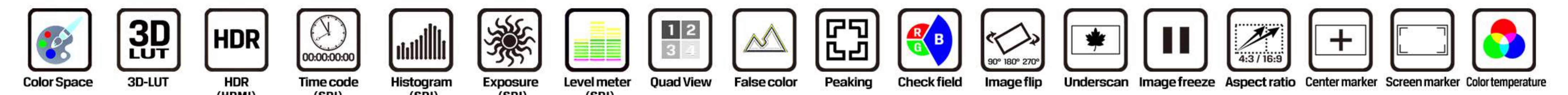
Multiple Views Display

It supports quad views splitted from different input signals simultaneously, such as SDI, HDMI, DVI and VGA.

Picture in Picture

Camera Auxiliary Functions

Plenty of auxiliary functions for taking photos and making movies, such as peaking, false color and audio level meter.



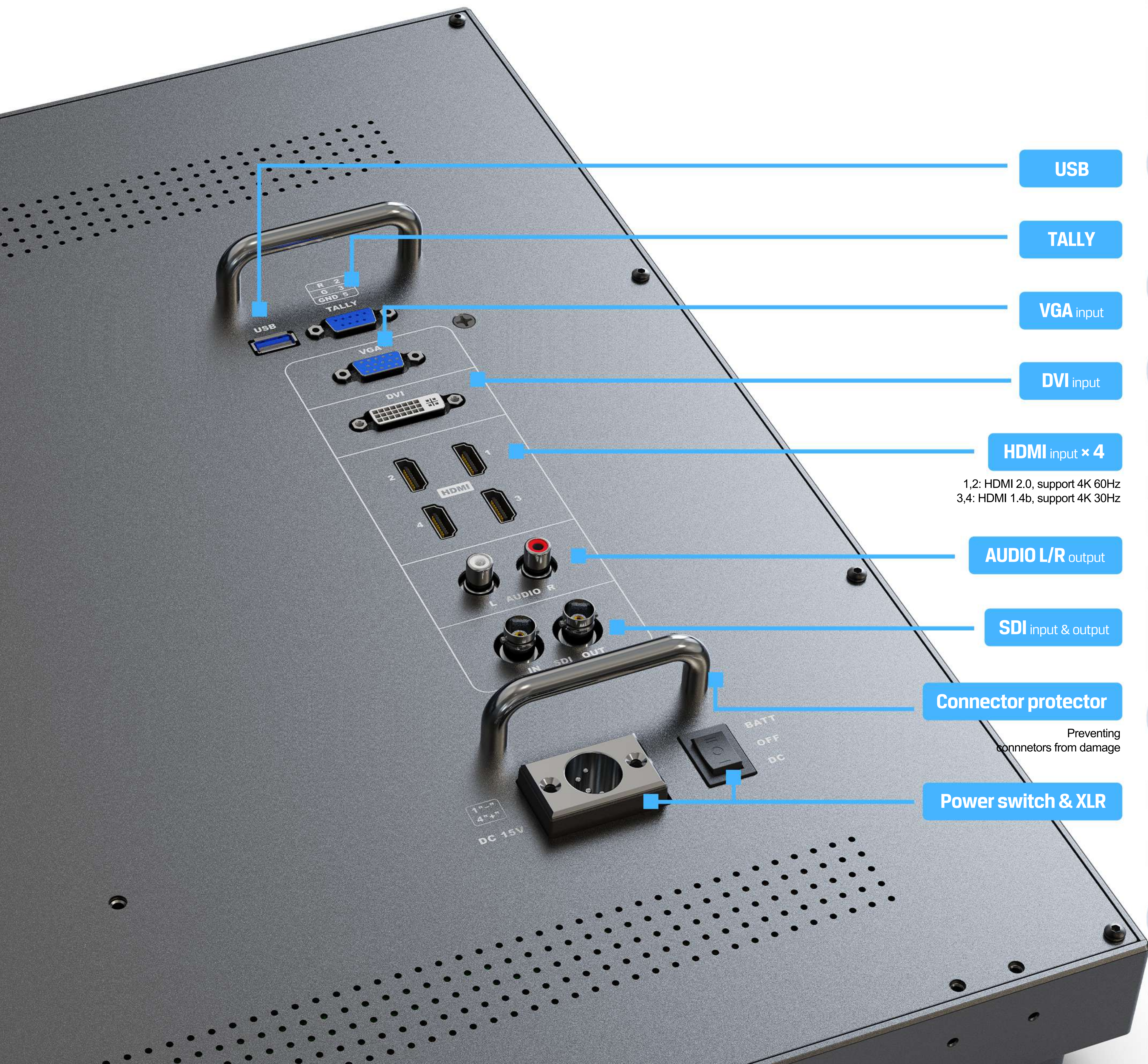
Wireless Video Transmitter (Optional)

Compatible with HDMI / SDI Wireless Video Transmitters, which has 150 meters transmission distance, supports up to 1080p 60Hz. The wireless video transmitter has good signal stability and low latency.



CNC Metalwork

Front panel CNC machined precision aluminium housing with a delicate and soft touch, difficult to deform and oxidise.



USB

TALLY

VGA input

DVI input

HDMI input × 4

1,2: HDMI 2.0, support 4K 60Hz
3,4: HDMI 1.4b, support 4K 30Hz

AUDIO L/R output

SDI input & output

Connector protector

Preventing connectors from damage

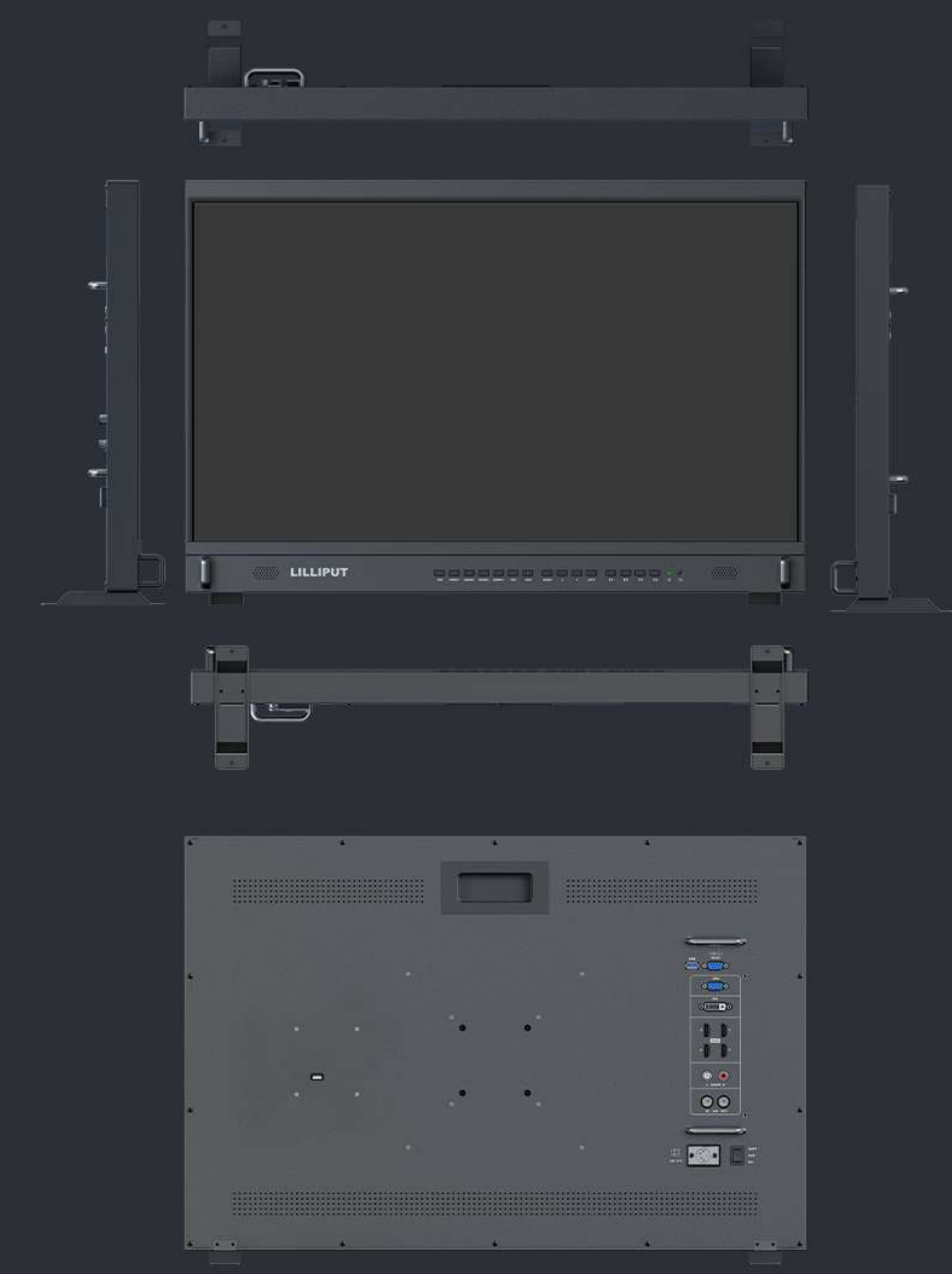
Power switch & XLR

WIRELESS VIDEO CONNECTION

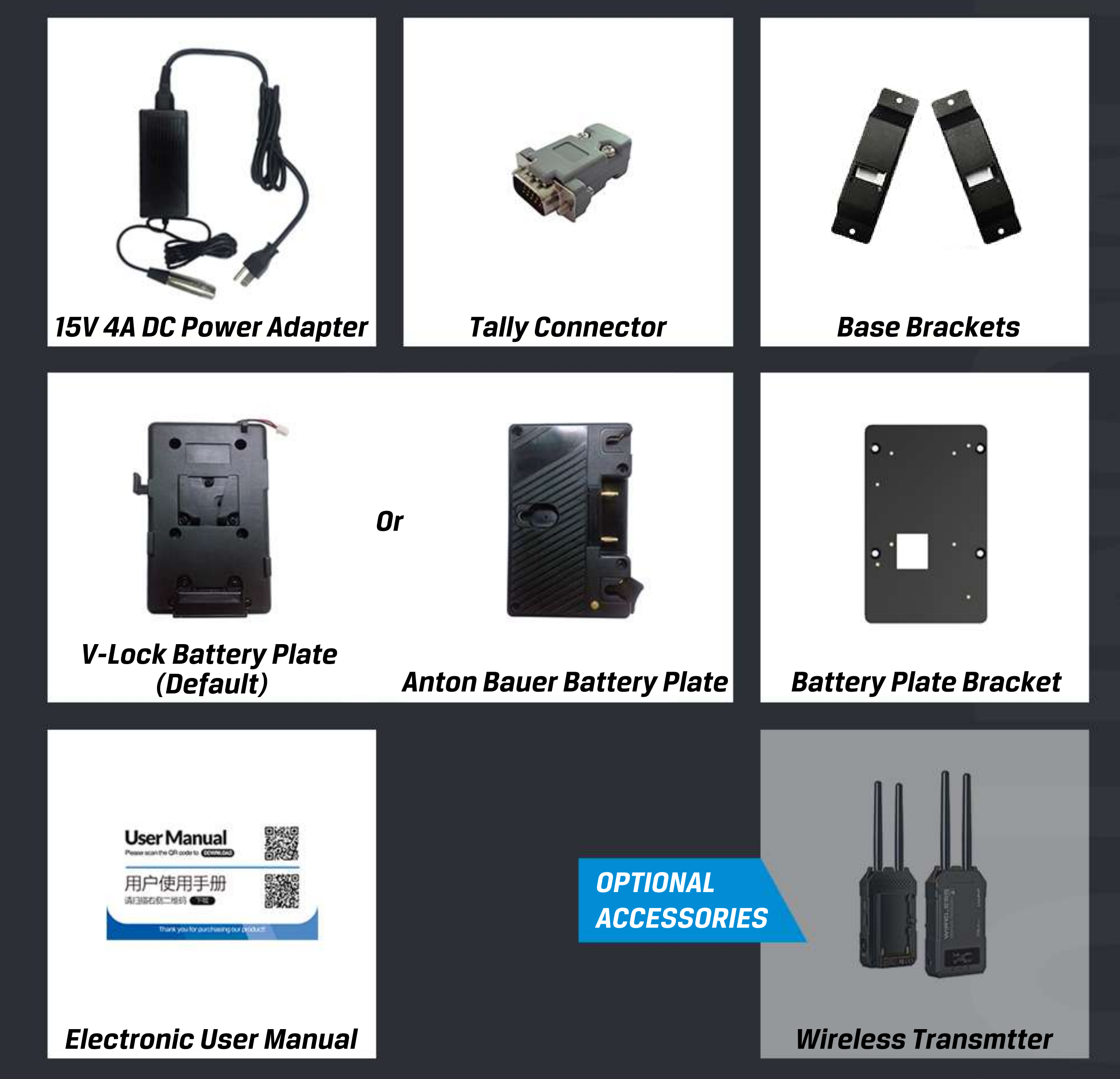
SPECIFICATIONS | ACCESSORIES



	BM150-4KS	BM280-4KS	BM310-4KS	
DISPLAY	Panel	15.6" 8 bit	28" 10 bit	31.5" 10 bit
	Physical Resolution	3840×2160	3840×2160	3840×2160
	Aspect Ratio	16:9	16:9	16:9
	Brightness	330cd/m ²	300cd/m ²	350cd/m ²
	Contrast	1000:1	1000:1	1300:1
	Viewing Angle (H/V)	176° / 176°	170° / 160°	178° / 178°
INPUT	3G-SDI	1		
	Wireless Transmitter	1 (optional)		
	HDMI	HDMI 2.0×2 (support 4K 60Hz) HDMI 1.4b×2 (support 4K 30Hz)		
	DVI	1		
	VGA	1		
	Audio	2 (L/R)		
	Tally	1		
OUTPUT	3G-SDI	1		
	Speaker	2		
AUDIO	Ear Phone Slot	1		
	Current	1.2A (15V)	3.4A (15V)	4.2A (15V)
POWER	Input Voltage	DC 12-24V (XLR)		
	Battery Plate	V-mount/ Anton Bauer mount		
	Power Consumption	≤18W	≤51W	≤67W
ENVIRONMENT	Operating Temperature	0°C~60°C	0°C~60°C	-10°C~50°C
	Storage Temperature	-20°C~60°C	-20°C~60°C	-20°C~60°C
	Dimension (LWD)(mm)	389×267×38	670×425×45	718×478×38
DIMENSION	Dimension (LWD)(with case)	524×305×170	761×474×173	-
	Weight	3.4kg	9.4kg	13.3kg
	Weight(with case)	12kg	21kg	-



STANDARD ACCESSORIES



Note: Due to constant effort to improve products and product features, specifications may change without notice.

