

LILLIPUT®

21.5" 1000 NITS LIVE STREAM RECORDING MONITOR



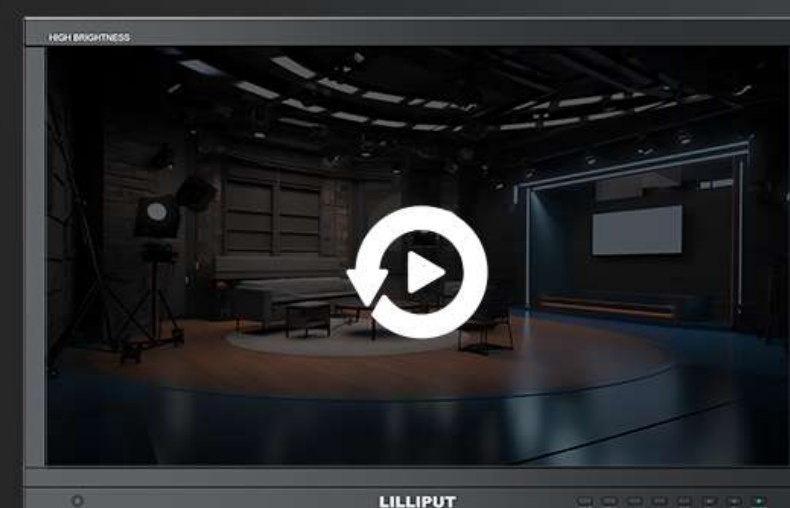
Model: PVM220S-E

High brightness live streaming monitor with recording function. Application for video push/pull streaming & live streaming



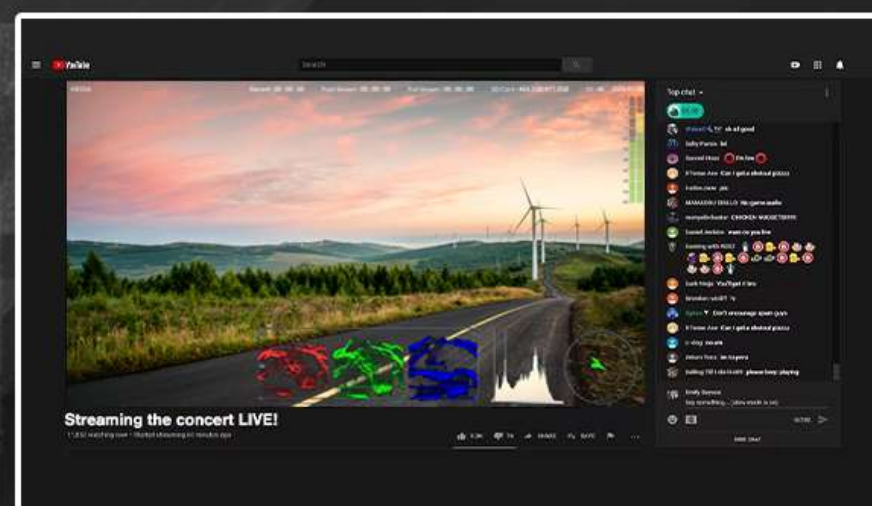
Recording Function

When setting the format of the recorded video, users can choose from Bitrate, Encoding, Resolution, FPS and other options.



Record playback

When the video recording is completed, users can select video playback in the menu.



Push Stream to 3 Platforms

Supports to push stream to 3 different live streaming platforms at the same time.



LAN

For PC or Router Connecting

Make sure the network is smooth and connect the push address of the live stream platform to share your unique ideas.



USB UPLOAD

For Push / Pull Stream Address

Create a text file to the USB flash drive to upload the push / pull stream address.



Network

Pull Stream From Network

Uploading the pull streaming address from the USB flash drive and show the creative ideas through the network.

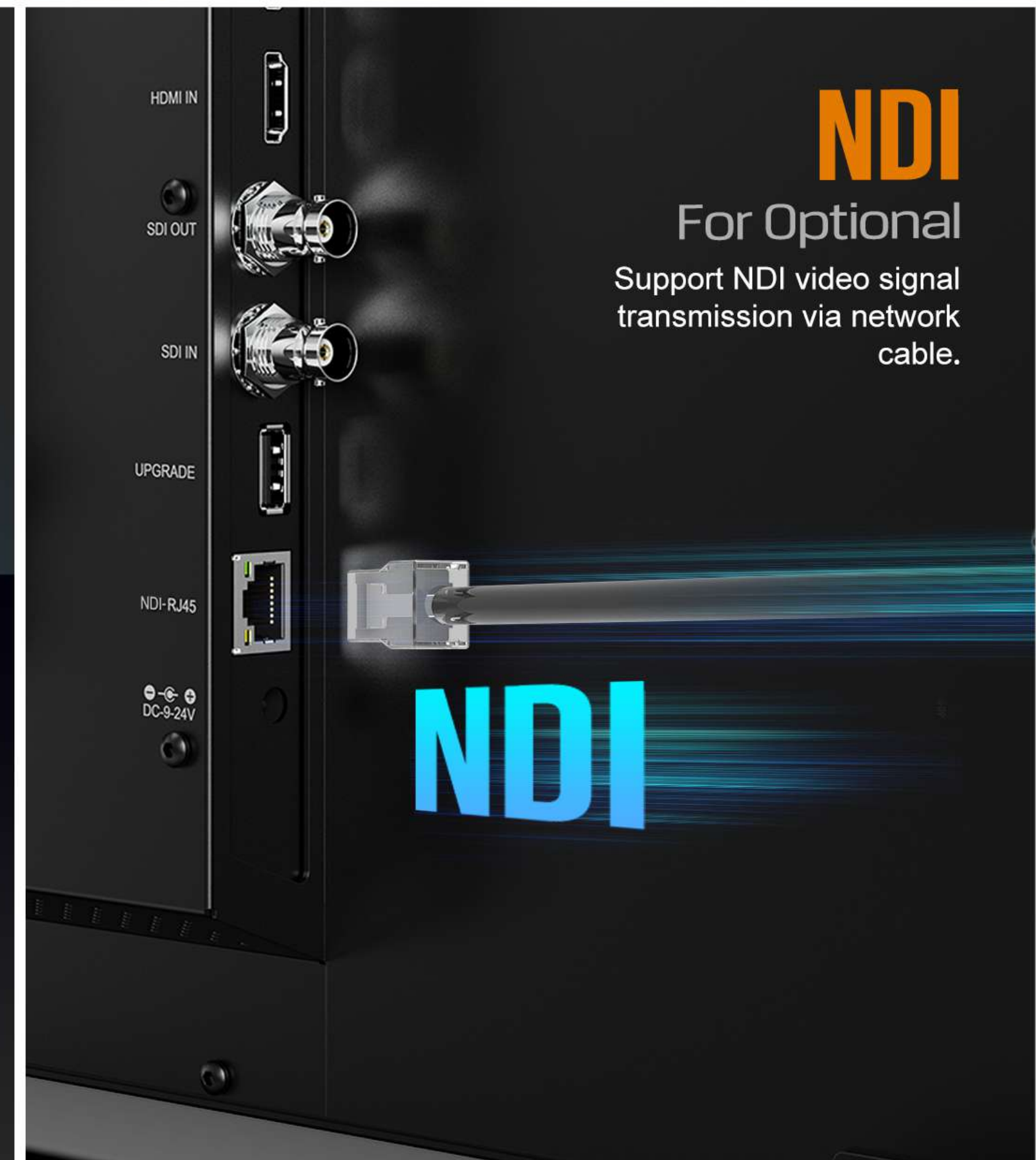
Easy to Reach A Live Event



Pull and Push Stream

With Website UI

Connect the monitor and computer to the same IP network segment, either static or dynamic environment. Then log in the web interface.



NDI

For Optional

Support NDI video signal transmission via network cable.

NDI

HDR

SUPPORT ST2084 300/1000/10000 / HLG

Making lighter and darker details to be displayed more clearly. Under 1000 nits brightness, it can show the effect of $1+1\geq 2$.

1000 NITS

FOR DAYTIME WITH STRONG SUNLIGHT

The high brightness screen makes it possible to see the image clearly even when it is exposed to sunlight.





BROADCAST



LUT OFF

LUT ON



FILMMAKING



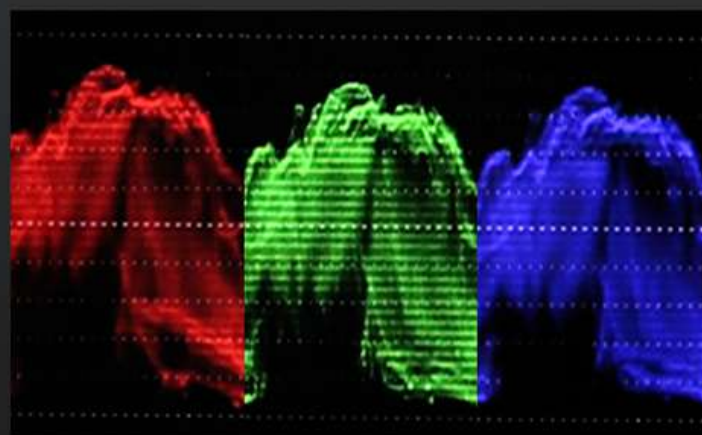
LIVE STREAM

3D-LUT

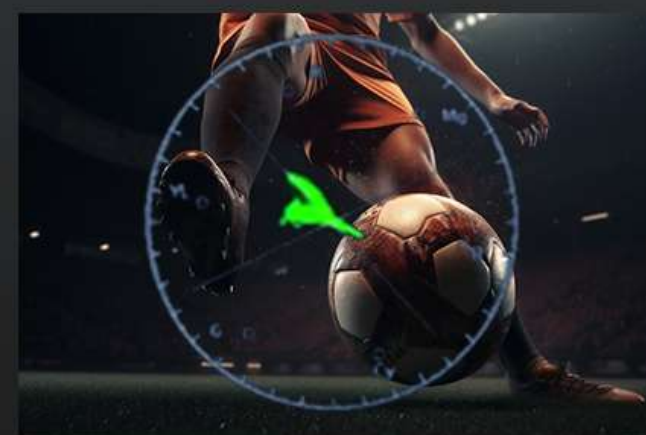
Import LUT tables via USB to dye your scenes with different colors. It can quickly recombine color tone to form different color styles.

Built-in 3D-LUT, featuring 17 default logs and 6 user logs.

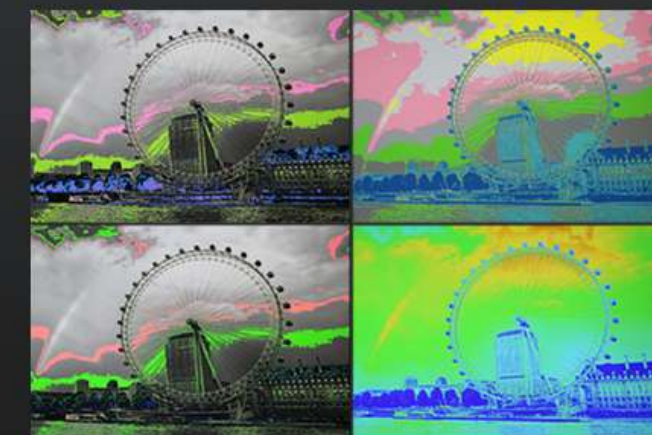
Camera Assist Functions



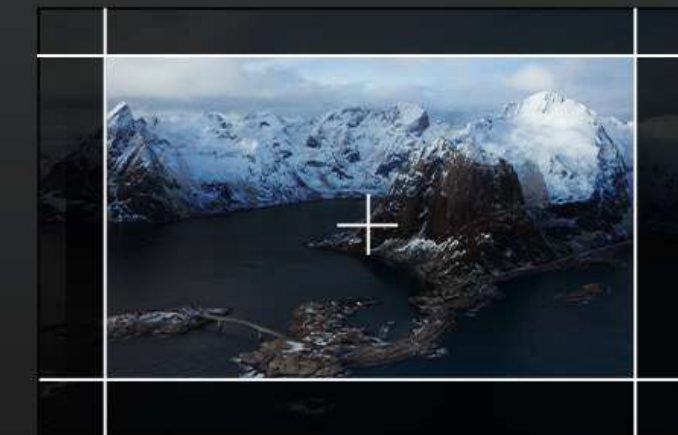
Full Screen Waveform



Full Screen Vectorscope



False Color



User Markers



Record



Push/Pull



Color Temp



Color Space



3D-LUT



HDR



Gamma



UMD



Time code



Vector scope



Waveform



Level meter



Histogram



Exposure



Peaking



False color



Check field



Color bar



Pixel zoom



Pix to pix



Marker



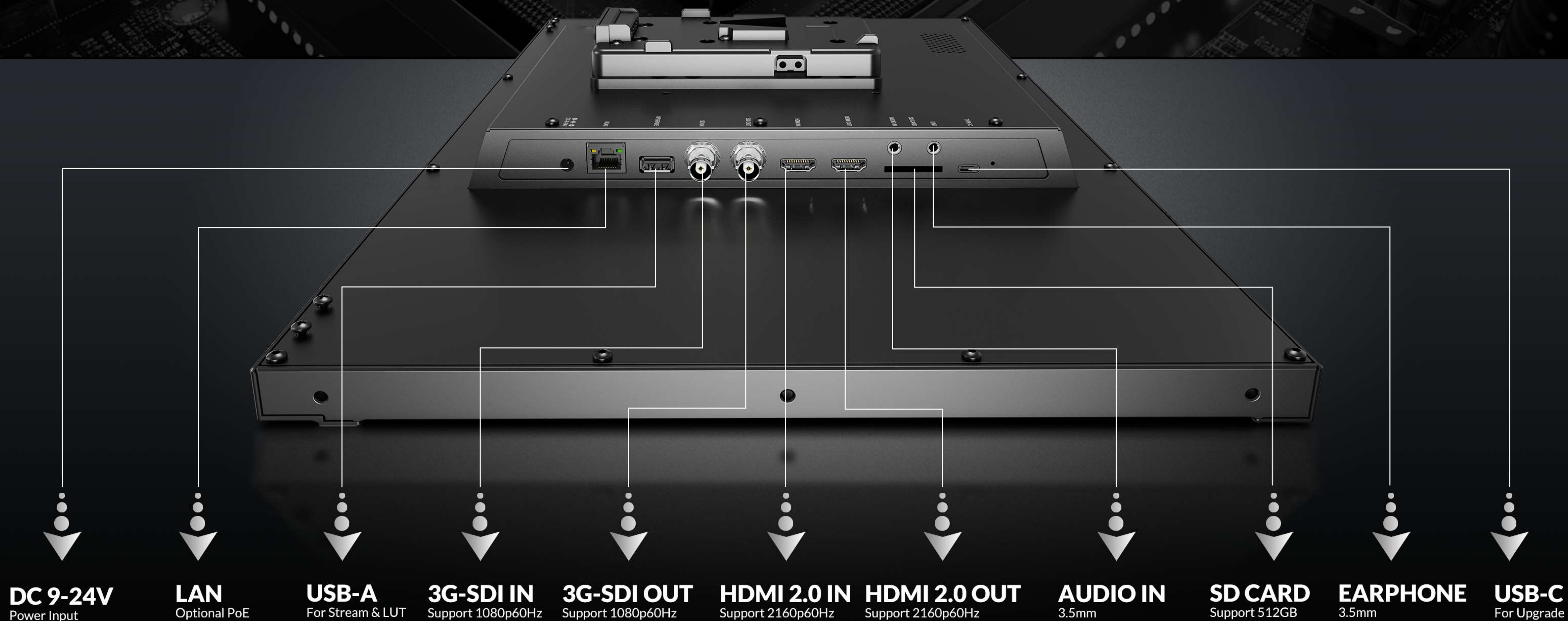
Freeze



H/V Delay

INTERFACES & BATTERY PLATE

The back of broadcast monitor is equipped with VESA 75mm / 100mm installation options, which is compatible with the installation of most light stands and battery plates. The battery plate can be selected from V-lock battery plate and Anton Bauer battery plate.





ACCESSORIES

STANDARD



15V 4A DC Adapter

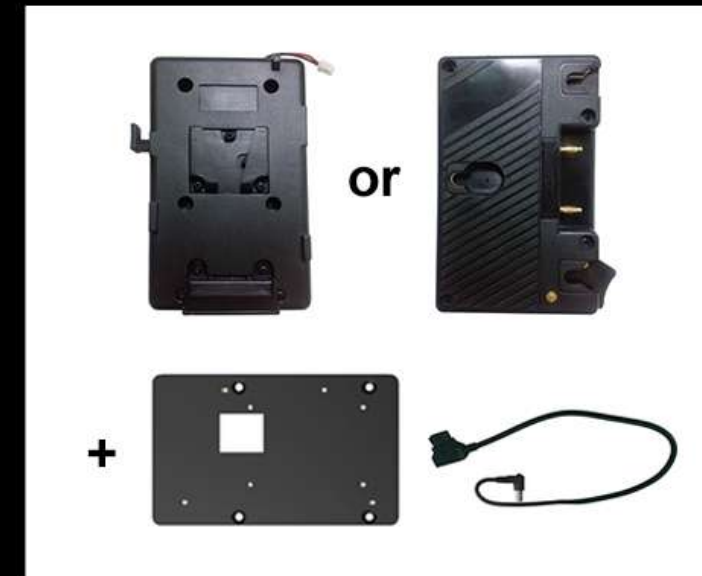


Base Bracket



E-User Manual

OPTIONAL



Battery Plate + D-Tap Cable



Carrying Case + Sunshade



Rack Mount Bracket
(for carrying case)

DISPLAY	Panel	21.5"
	Physical Resolution	1920×1080
	Aspect Ratio	16:9
	Brightness	1000cd/m²
	Contrast	1000:1
	Viewing Angle	178°/ 178°(H/V)
	HDR	ST2084 300/1000/10000/HLG
	Supported Log formats	SLog2 / SLog3 / CLog / NLog / ArriLog / JLog or User...
	Look up table (LUT) support	3D LUT (.cube format)
	Calibration	Calibration to Rec.709 with optional calibration unit
VIDEO INPUT	SDI	1×3G
	HDMI	1×HDMI 2.0
VIDEO LOOP OUTPUT	SDI	1×3G
	HDMI	1×HDMI 2.0
	LAN	1×1000M, PoE is optional
SUPPORTED FORMATS	SDI	1080p 24/25/30/50/60, 1080pSF 24/25/30, 1080i 50/60...
	HDMI	2160p 24/25/30/50/60, 1080p 24/25/30/50/60, 1080i 50/60, 720p 50/60...
	IP	Push / Pull Streaming: YCbCr 4:2:2 Video code (Support up to 32 Mbps@1080p60)
	Streaming Formats	Push Streaming: SRT, RTMP; Pull Streaming: RTMP, RTSP, HTTP, HTTPS, NDI HX (Optional)
RECORDING	Video Resolution	1920×1080 / 1280×720 / 720×480
	Frame Rates	60 / 50 / 30 / 25 / 24
	Codes	H.264
	Audio SR	44.1kHz / 48kHz
	Storage	SD Card, support 512GB
	Split Rec File	1min / 5 mins / 10 mins / 20 mins / 30 mins / 60 mins
Audio In/Out (48kHz PCM Audio)	SDI	2ch 48kHz 24-bit
	HDMI	8ch 24-bit
	Ear Jack	3.5mm
	Built-in Speakers	1
POWER	Input Voltage	DC 9-24V
	Power Consumption	≤53W (DC 15V / Optional PoE PD function, supports IEEE802.3 bt protocol)
	Compatible battery type	V-Lock or Anton Bauer Mounts (Optional)
	Input voltage (battery)	14.8V nominal
ENVIRONMENT	Operating Temperature	0°C~50°C
	Storage Temperature	-20°C~60°C
OTHER	Dimension(LWD)(mm)	508×321×47
	Weight	4.75kg

Note: Due to constant effort to improve products and product features, specifications may change without notice.

