

10.1" 1500 NITS HIGH BRIGHTNESS INDUSTRIAL-GRADE TOUCH MONITOR



1500 Nits



1920x1200



10-Point PCAP



Auto Dimming



HDMI / VGA
USB-C



IP65 Front Panel



Metal Housing



-20°C ~ 70°C

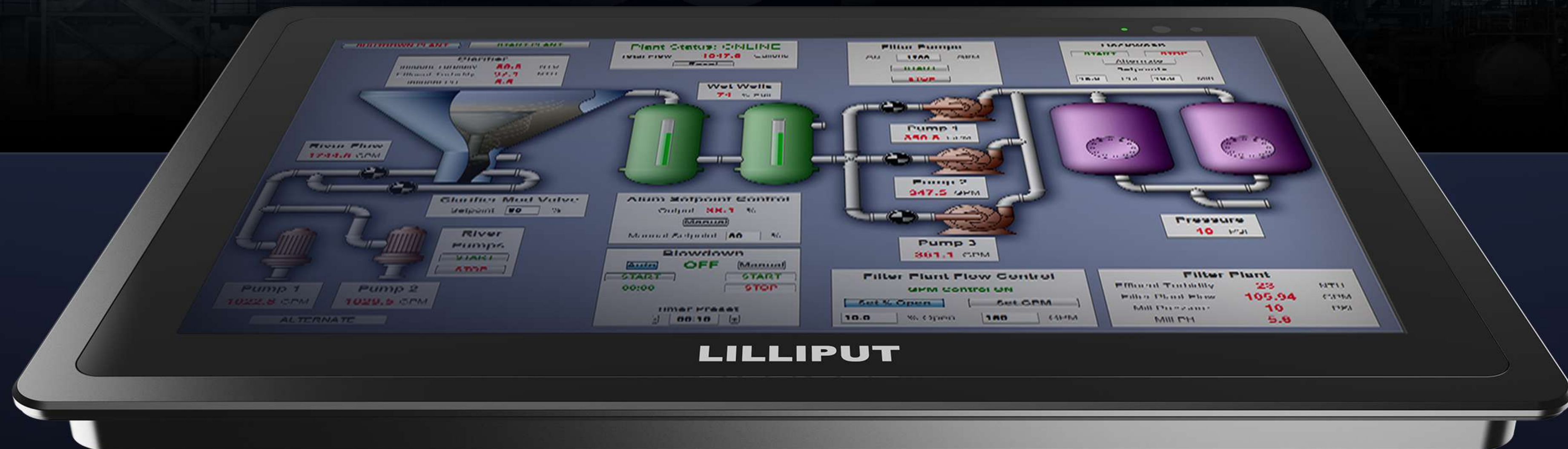


LED PANEL LIFE TIME

A selection of high quality industrial LCD
with a longer life time.

MODEL NO.:
TK1019/C | TK1019/T
Without touch With touch

1500 NITS



Touch monitor features with 1500 nits high brightness for outdoor sunlight readable.



10.1" FHD

10.1" Industrial-grade touch screen panel with 1920×1200 resolution.



1500 NITS

The screen can still be seen clearly in outdoor use without hindering operation.



AUTO DIMMING

Depending on the intensity of ambient light, the brightness of screen will be automatically adjusted to save power.

50000 Hours

LED PANEL LIFE TIME

High quality industrial-grade LCD screen through multiple tests, giving the monitors an exceptional working life.



LILLI

HDMI / VGA / USB-C

RICH INTERFACES

The monitor has abundant interfaces, including an USB-C type interface that can transmit both video signal and touch function, making wiring easier.



ANTI-DROP
USB Type-C cable with anti-drop design.

DC POWER IN
12V-24V Input.

USB TYPE-C
For touch function, video signal from PC, or power.
**Tip: The PC must support PD protocol for video signal

VGA IN
Support up to 1080p 60Hz.



HDMI IN
HDMI Interface with anti-drop design.

EARPHONE JACK
3.5mm, audio output.



IP65 RATING FOR FRONT PANEL

Monitor is designed to carry IP65 degree of protection which offer complete protection against particles, and a good level of protection against water projected by a nozzle against monitor from any direction.



SCREWS FOR FIXING

The monitor can be embedded in a panel by using the special fixing screw kits.



VESA 75MM BRACKET

Quality folding VESA 75mm bracket that can be placed on a table or fixed to ceiling.



INDUSTRIAL CONTROL



DASHBOARD INTERFACE



SMART LOCKER

SPECIFICATIONS

MODEL NO.		TK1019/C	TK1019/T
DISPLAY	Touch Screen	Non-touch	10-point PCAP
	Panel	10.1" LCD	
	Physical Resolution	1920×1200	
	Aspect Ratio	16:10	
	Brightness	1500 nits	
	Contrast	1000:1	
	Viewing Angle	170°/ 170°(H/V)	
	LED Panel Life Time	50000h	
INPUT	HDMI	1	
	VGA	1	
	USB	1×USB Type-C (For touch, video signal or power)	
SUPPORTED FORMATS	HDMI	2160p 24/25/30, 1080p 24/25/30/50/60, 1080i 50/60, 720p 50/60...	
	VGA	1080p 24/25/30/50/60, 1080pSF 24/25/30, 1080i 50/60, 720p 50/60...	
	USB Type-C	2160p 24/25/30/50/60, 1080p 24/25/30/50/60, 1080i 50/60, 720p 50/60...	
AUDIO IN/OUT	Speaker	1	
	HDMI	Available	
	Ear Jack	3.5mm - 2ch 48kHz 24-bit	
POWER	Input Voltage	DC 12-24V	
	Power Consumption	≤19W (12V)	
ENVIRONMENT	IP Rating	IP65 Front Panel	
	Operating Temperature	-20°C~70°C	
	Storage Temperature	-30°C~80°C	
DIMENSION	Dimension(LWD)	264mm × 183mm × 35.6mm	
	Weight	1.31kg	

Note: Due to constant effort to improve products and product features, specifications may change without notice.



ACCESSORIES

STANDARD



12V 3A Power Adapter

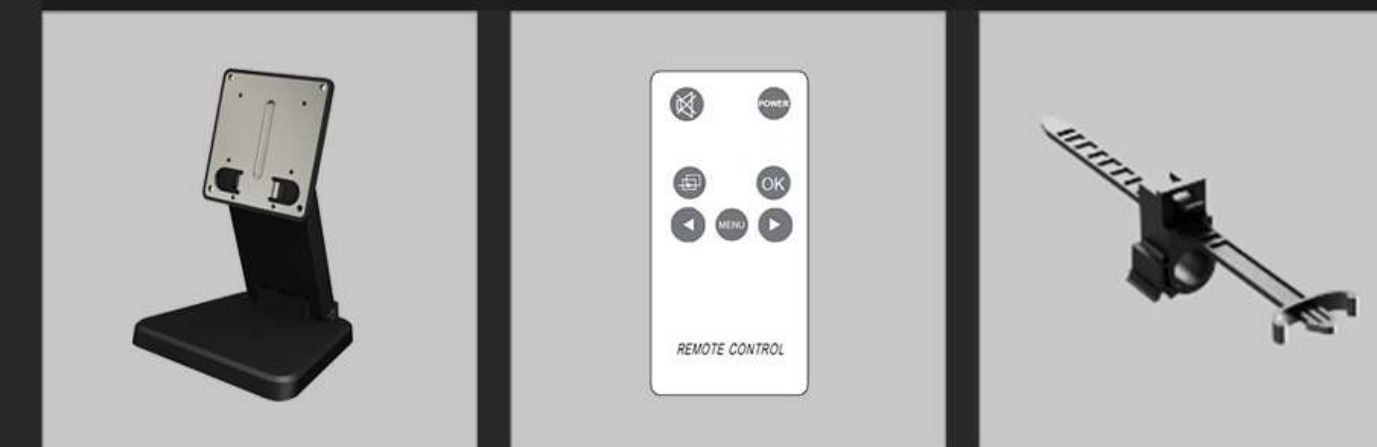
HDMI A-A Cable

USB-C - C Cable (With Screw)

USB-A - C Cable (For Touch)

Screw Kits

OPTIONAL



VESA 75mm Bracket

Remote Control

HDMI Cable Lock

